



## Frameless Aluminum Sliding Window with Minimalist Design

Our Product Introduction

for more products please visit us on [aluminiumwindowdoor.com](http://aluminiumwindowdoor.com)

### Basic Information

- Place of Origin: China
- Brand Name: Eloyd
- Certification: CE/CSA/AS2047
- Model Number: 110 sliding Window
- Minimum Order Quantity: 2
- Price: USD78/
- Packaging Details: EPE Foam wrapped
- Delivery Time: 25-30days
- Payment Terms: L/C,T/T,Western Union,PayPal
- Supply Ability: 10000

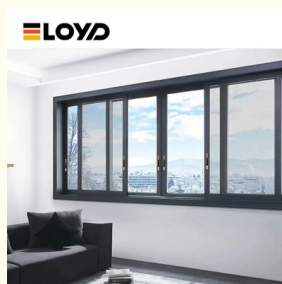


### Product Specification

- Color: Black
- Glass Type: Tempered
- Material: 2.0mm Aluminium Thickness
- Glass: Glass:5+20A+5mm
- Design: According To Confirmed Drawing
- Accessory: Fly Net / Fly Curtain / High Downtrack(For Water-proof)
- PackageMethod: EPE Foam Wrapped
- Hardware: BOGO
- Stainless Steel: 10 Years
- Highlight: frameless aluminum sliding window, minimalist sliding window design, aluminum sliding window with warranty



### More Images



## Product Description

# Frameless Aluminum Sliding Window with Minimalist Design

### Extended Product Details:

This frameless aluminum sliding window is designed for luxury homes and modern architectural projects. Its slim profiles create an almost invisible frame, offering unobstructed views and a sleek appearance.

The system supports oversized glass panels, allowing architects to design glass walls and open facades. High-precision rollers ensure effortless operation even for large panels, while multi-point locks enhance safety.

Despite its slim design, the window meets international standards for wind resistance, water tightness, and acoustic insulation.

### Applications:

Ideal for modern villas, penthouses, showrooms, and offices.

### Customization:

Supports double or triple glazing up to 40mm. Available in anodized black, champagne, silver, or custom powder-coated finishes.

### Product Parameters:

SERIES	128 sliding Window
BRAND	Eloyd
PROFILE	6063# T5 aluminum alloy profiles
THICKNESS	2.0mm aluminium thickness
GLASS	Glass:5+20A+5mm Double Clear Tempered Glass
HARDWARE	BOGO Lock & Handle
SURFACE TREATMENT	Powder Coating, Anodized

## Panoramic sliding window

Warranty service, More than 5 years



Whole house  
customization



High efficiency  
sound insulation



Multiple seal



Guaranteed  
after sale



CE certification



6063 primary aluminum

High quality PA66GF25

European arc line, optional hypotenuse line design

Imported fluorocarbon paint finish

Frame fan inside and outside flush design

Hollow aluminum strip filled with molecular sieve

5+12A+5 large hollow tempered glass

Openable guard rail design

GB304# stainless steel diamond gauze

Industry high-end system window hardware

Sealing process of duck bill strip

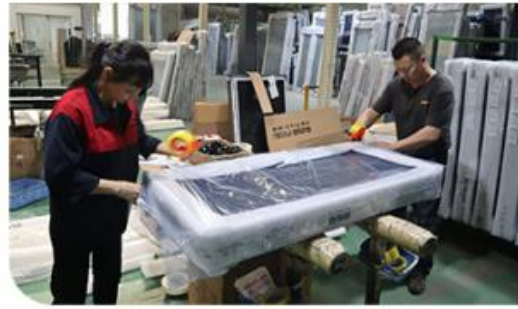
Thermal break isotherm design

Wind pressure resistance: Lv. 9

## Property



# Packing and shipping



## TRANSPORTATION



## **Logistics AndTransportation**

Clear and trackable logistics process

ELOYD understand the importance of timely and safe delivery. That's why we offer an efficient logistics service, letting you track your order anytime.

Comprehensive door-to-door transportation service

We offer a complete door-to-door transportation service from our factory to your doorstep, aiming to provide you with a pleasant shopping experience.

### **Packing and delivery process**

1. Product Packaging 2. Product Sorting 3. Dispatch 4. Confirmation of Goods 5. Logistics Unloading 6. Buyer Receiving



# Project case



America



Germany



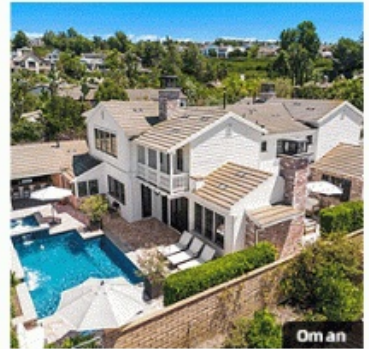
America



Britain



Australia



Oman



Russia

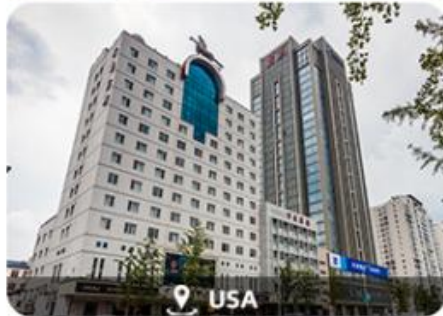


Singapore

# HIGH-END

ONE-STOP FOR HIGH-END RESIDENTIAL & COMMERCIAL PROJECTS

[VIEW MORE](#)







ROHS | CE | FCC | Quality certification...

Be rated as an excellent credit enterprise, 2025

Multiple R&D Design Patents :  
Hardware, Appearance, Software, System-Communication.....



# 50,000<sup>2</sup>

## Production Area

Professional enterprise of aluminum, wood clad aluminum and upvc windows and doors.



Foshan Yiluode Doors And Windows Co., Ltd.



+8618169835994



sales08@fseloyd.com



aluminiumwindowsdoor.com

6-2 North Songgang Industrial Road, Shishan Town Foshan Guangdong China