



## Double-layer hollow glass soundproof casement windows Replacement for balcony

Our Product Introduction

for more products please visit us on [aluminiumwindowdoor.com](http://aluminiumwindowdoor.com)

### Basic Information

- Place of Origin: China
- Brand Name: Loyd
- Certification: CE
- Model Number: 125 serie Casement Window
- Minimum Order Quantity: 2
- Price: USD115/
- Packaging Details: EPE Foam wrapped
- Delivery Time: 25-30days
- Payment Terms: L/C,T/T,Western Union,PayPal
- Supply Ability: 10000



### Product Specification

- Screen Color: Aluminium Frame+glass
- Color Options: Black
- Glass: 5+27A+5mm Double Clear Tempered Glass
- Material: 2.0mm Thick Aluminium
- Design: According To Confirmed Drawing
- Accessory: Fly Net / Fly Curtain / High Downtrack(For Water-proof)
- Package: EPE Foam Wrapped
- Installation Method: Full Frame Replacement
- Highlight: double glazed aluminum casement window , thermal break casement window replacement, aluminum casement window with thermal break



### More Images



## Product Description

# Double-layer hollow glass soundproof casement windows Replacement for balcony

### Extended Product Details:

Our modern aluminum casement window is engineered to deliver exceptional performance and style. The frame is manufactured from high-grade aluminum alloy, enhanced with a **thermal break design** that prevents heat transfer and maintains a comfortable indoor climate throughout all seasons. The **double or triple glazing options** offer enhanced energy efficiency, helping reduce electricity bills while improving acoustic comfort by blocking external noise.

The outward opening system ensures maximum airflow, making your living space naturally bright and well-ventilated. **Amulti-point locking system** provides reliable security, while the precision-engineered EPDM gaskets guarantee outstanding sealing against wind, dust, and heavy rain.

Coated with a **UV-resistant powder finish**, this window resists corrosion, fading, and wear, even in coastal or humid environments. Customization options include various glass types (low-E, laminated, tinted), frame colors, and hardware finishes, allowing you to match any architectural style—from modern villas to commercial buildings. Designed for durability, energy efficiency, and aesthetics, this window is an excellent choice for homeowners and project developers seeking long-term value.

### Product Paramenters:



# Certificate



AS2047



CSA



CE



CE



ALIBABA CERTIFICATION



Intertek  
Total Quality Assured.



PATENT CERTIFICATE



PATENT CERTIFICATE



# Project case



America



Germany



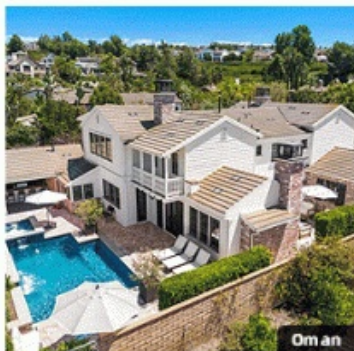
America



Britain



Australia



Oman



Russia



Singapore



Foshan Yiluode Doors And Windows Co., Ltd.



+8618169835994



sales08@fseloyd.com



aluminiumwindowsdoor.com

6-2 North Songgang Industrial Road, Shishan Town Foshan Guangdong China