



Thermal-Break Dual-Action House Windows Aluminum Alloy Glass Fixed Windows

Our Product Introduction

for more products please visit us on aluminiumwindowsdoor.com

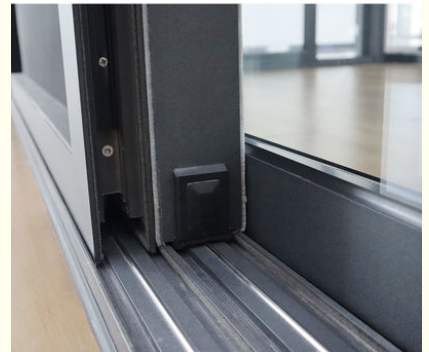
Basic Information

- Place of Origin: China
- Brand Name: Eloyd
- Certification: CE
- Model Number: Fixed Windows
- Minimum Order Quantity: 2
- Price: USD115/
- Packaging Details: EPE Foam wrapped
- Delivery Time: 25-30days
- Payment Terms: L/C, T/T, Western Union, PayPal
- Supply Ability: 10000

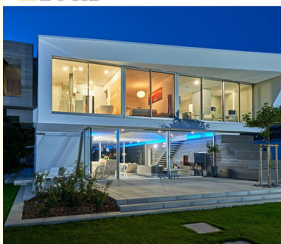


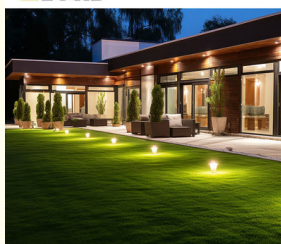

Product Specification

- Security Features: Locking Mechanism, Reinforced Glass
- Energy Efficiency: High
- Glass: 5+20+5mm Double Clear Tempered Glass
- Design: According To Confirmed Drawing
- Thick: 2.0mm Thick Aluminium
- Package: EPE Foam Wrapped
- Installation Method: Full Frame Replacement
- Certifications: CE
- Highlight: Aluminum Alloy Fixed Windows

More Images



Thermal-Break Dual-Action House Windows Aluminum Alloy Glass Fixed Windows

What is 6063-T5 ?

6063:6063 aluminum alloy is an aluminum-magnesium-silicon alloy, mainly composed of aluminum (Al) and elements such as magnesium (Mg) and silicon (Si) are added to improve its properties. This alloy has moderate strength, good corrosion resistance, weldability and easy processing, -T5:

This part indicates the heat treatment state of the aluminum alloy.

The T5 state means that the alloy has been artificially aged to improve its strength and hardness. Specifically, the T5 state is achieved by heating the alloy to the solution treatment temperature, then rapidly cooling (quenching), followed by artificial aging at a lower temperature to achieve the desired physical and mechanical properties.

Technical Data:

Anti-fall configuration

The window anti-fall rope is a safety device designed specifically for windows. It prevents windows from falling by pulling the rope when the window is accidentally opened or loosened.

Function

Anti-fall function: It can quickly provide tension when the window is accidentally loosened or opened to prevent the window from falling in whole or in part. Safety guarantee: For public buildings such as high-rise residential buildings, schools, and hospitals, the window anti-fall rope is one of the important measures to ensure the safety of windows, which can effectively reduce the risk of safety accidents caused by window falling.

Material: Made of high-strength and corrosion-resistant materials such as stainless steel and steel wire rope to ensure that it can withstand sufficient tension and maintain stability during use.

Insulating glass:

Insulating glass is a high-performance sound-insulating and heat-insulating glass made of two or more pieces of glass, which is bonded to an aluminum alloy frame containing a desiccant using a high-strength and high-airtightness composite adhesive. Insulating glass plays an important role in modern architecture with its superior performance and wide range of applications.

Common sizes:

5+6A+55+9A+55+12A+55+15A+55+18A+55+20A+55+22A+55+27A+5

6+6A+66+9A+66+12A+66+15A+66+18A+66+20A+66+22A+66+27A+6

Floor Drainag;

Solve the problem of loss: The floor drain is fixed with a special drain hole cover and screws, which effectively solves the problem that the traditional drain hole cover is easy to lose. Prevent backflow: The downward tilted design makes water retention faster and less likely to form water accumulation, thereby reducing the possibility of rainwater backflow. Enhance water tightness: The good water tightness design allows doors and windows to be fearless of heavy rain and effectively prevent outdoor rainwater from entering the room. Aesthetics: Although the drainage system is visible in appearance, the special drain hole cover design can make it integrated with the window frame to maintain the overall aesthetics of the doors and windows.

Product Paramenters:

SERIES	Fixed Windows
BRAND	Eloyd
PROFILE	6063# T5 aluminum alloy profiles
THICKNESS	2.0mm aluminium thickness
GLASS	5mm+20A+5mm Double Tempered Glass
HARDWARE	Gingle Handle
SURFACE TREATMENT	Powder Coating, Anodized



Packing and shipping



TRANSPORTATION



Logistics AndTransportation

Clear and trackable logistics process

ELOYD understand the importance of timely and safe delivery. That's why we offer an efficient logistics service, letting you track your order anytime.

Comprehensive door-to-door transportation service

We offer a complete door-to-door transportation service from our factory to your doorstep, aiming to provide you with a pleasant shopping experience.

Packing and delivery process

1. Product Packaging 2. Product Sorting 3. Dispatch 4. Confirmation of Goods 5. Logistics Unloading 6. Buyer Receiving

Certificate



AS2047



CSA



CE



CE



ALIBABA CERTIFICATION



intertek
Total Quality Assured.



PATENT CERTIFICATE



PATENT CERTIFICATE

Project case



America



Germany



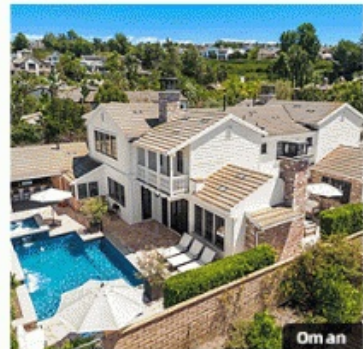
America



Britain



Australia



Oman



Russia



Singapore

ARE YOU A CONTRACTOR ?

Project Experience:

Both in personal cases solution and project construction, Eloyd has professional guidance and experience.

1. High-quality windows and doors
2. Engineering quality assurance
3. One-stop supply of windows and doors
4. Installation tutorial
5. After-sales service
6. Delivery and shipment



Foshan Yiluode Doors And Windows Co., Ltd.



+8618169835994



sales08@fseloyd.com



aluminiumwindowsdoor.com

6-2 North Songgang Industrial Road, Shishan Town Foshan Guangdong China