



Motorized Security Sliding Burglar Door Weatherproof Glass Bronze Black

Our Product Introduction

for more products please visit us on aluminiumwindowsdoor.com

Basic Information

- Place of Origin: China
- Brand Name: Loyd
- Certification: CE
- Model Number: 56 serie sliding door
- Minimum Order Quantity: 2
- Price: USD78/
- Packaging Details: EPE Foam wrapped
- Delivery Time: 25-30days
- Payment Terms: L/C, T/T, Western Union, PayPal
- Supply Ability: 10000

 **LOYD**



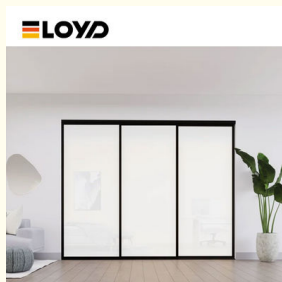
Product Specification

- Selling Units: Single Item
- Open Style: Push-and-pull
- Material: 2.2mm/3.0mm Thick Aluminium
- Glass: 5+20A+5mm Double Clear Tempered Glass
- Design: According To Confirmed Drawing
- Drawings: 3D Design Drawings
- Package Method: EPE Foam Wrapped
- Hardware: Germany RUNAS
- Stainless Steel: 10 Years
- Highlight: **Motorized sliding burglar door,
Weatherproof sliding burglar door,
Weatherproof motorized sliding glass door**

 **LOYD**



More Images



Product Description

Automatic Waterproof Windproof Aluminum Glass Sliding Patio Doors

Technical Data:

1. 6063-T5 aviation grade aluminum
2. Broken bridge aluminum alloy profile
3. Sound insulation and heat preservation
4. Waterproof and hurricane resistance
5. Optional motorized blinds
6. Both sliders open
7. Metal wall thickness: 2 mm,
8. Custom color coating finish
9. Insulated double pane tempered glass with argon inside

Design:

The whole set of locking hardware uses BOGO hardware accessories. 45 Sliding door uses BOGO system hardware, with corrosion resistance, wear resistance, high strength characteristics, to ensure the durability and stability of the product. HIDDEN STEP DRAINAGE SYSTEM Avoid rainwater backflooding Beautiful and smooth drainage Hidden step drainage structure, smooth drainage, reduce water accumulation improve the wind pressure resistance, effectively prevent rainwater backpouring. HIGH ORBIT AND LOW ORBIT Different scenes, choose different tracks. MUTE SYSTEM BEARING MUTE ROLLERS. Push and pull hundreds of thousands of times, Product open flexible, push and pull sliding smooth light, standard silent.

FAQ:

Q1: What is a 56 Series sliding door?

A: The 56 Series sliding door is a specific line of sliding doors known for its sleek design

Q2: What materials are used in the 56 Series sliding doors?

A: These doors are often constructed from high-quality aluminum

Q3: Are 56 Series sliding doors energy-efficient?

A: Yes, the 56 Series is designed with thermal breaks and insulated glazing options

Q4: What are the standard sizes available for the 56 Series sliding doors?

A: Standard sizes may vary by manufacturer

Q5: Can the 56 Series sliding doors be customized?

A: Yes, these doors can often be customized in terms of size, color, finishes, and hardware options to suit your specific design preferences.

What is a sliding door?

Protection from Coastal Weather Engineered to sustain high winds and flying debris generated by a tropical storm or hurricane. Premium Aesthetics

Narrow sightlines provide a clean, shutter-free, well-maintained aesthetic to your home.

Dramatically Large Sizes

Offers expansive views with big glass and dramatically large sizes to bring your most ambitious projects to life.

High-Quality Materials Made with extruded aluminum and impact-resistant glass.

Design Flexibility

Features a range of product types, sizes, configurations, and design options.

Product Parameters:

SERIES	56 series sliding door
BRAND	Eloyd
PROFILE	6063# T5 aluminum alloy profiles
THICKNESS	2.2mm/3.0mm Thick Aluminium
GLASS	5+20A+5mm Double Clear Tempered Glass
HARDWARE	BOGO Lock & Handle
SURFACE TREATMENT	Powder Coating, Anodized

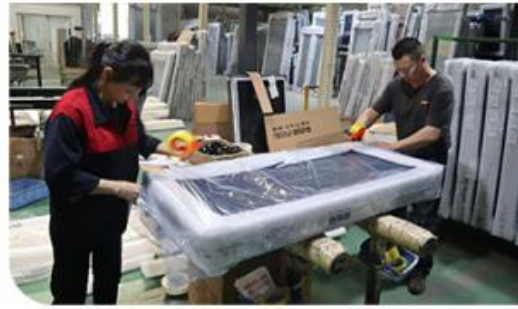


PRODUCT PARAMETER

LOYD



Packing and shipping



TRANSPORTATION



Logistics AndTransportation

Clear and trackable logistics process

ELOYD understand the importance of timely and safe delivery. That's why we offer an efficient logistics service, letting you track your order anytime.

Comprehensive door-to-door transportation service

We offer a complete door-to-door transportation service from our factory to your doorstep, aiming to provide you with a pleasant shopping experience.

Packing and delivery process

1. Product Packaging 2. Product Sorting 3. Dispatch 4. Confirmation of Goods 5. Logistics Unloading 6. Buyer Receiving

Certificate



AS2047



CSA



CE



CE



ALIBABA CERTIFICATION



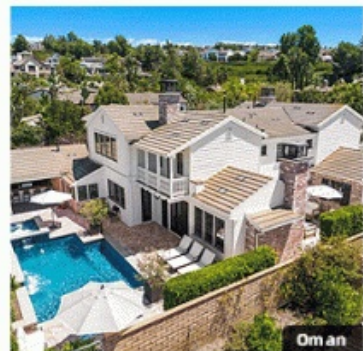
Intertek
Total Quality Assured.



PATENT CERTIFICATE



PATENT CERTIFICATE



ARE YOU A CONTRACTOR ?

Project Experience:

Both in personal cases solution and project construction, Eloyd has professional guidance and experience.

1. High-quality windows and doors
2. Engineering quality assurance
3. One-stop supply of windows and doors
4. Installation tutorial
5. After-sales service
6. Delivery and shipment



Foshan Yiluode Doors And Windows Co., Ltd.

+8618169835994

sales08@fseloyd.com

aluminiumwindowsdoor.com

6-2 North Songgang Industrial Road, Shishan Town Foshan Guangdong China