



## Waterproof Double Glass Aluminum Sliding Patio Doors Bi Fold French Doors Hurricanproof

Our Product Introduction

for more products please visit us on [aluminiumwindowsdoor.com](http://aluminiumwindowsdoor.com)

### Basic Information

- Place of Origin: China
- Brand Name: Loyd
- Certification: CE
- Model Number: 78 serie folding door
- Minimum Order Quantity: 2
- Price: 168USD/
- Packaging Details: EPE Foam wrapped
- Delivery Time: 25-30days
- Payment Terms: L/C, T/T, Western Union, PayPal
- Supply Ability: 10000

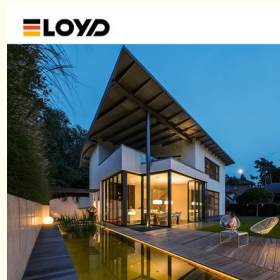



### Product Specification

- Weather Resistance: Waterproof
- Durability: High
- Glass: 5+20A+5mm Double Clear Tempered Glass
- Drawings: 3D Design Drawings
- Package Method: EPE Foam Wrapped
- Hardware: Germany RUNAS
- Warranty: 10 Years
- SURFACE TREATMENT: Powder Coating
- Highlight: **Waterproof aluminum sliding patio doors,  
Hurricanproof aluminum sliding patio doors,  
Waterproof bi fold french doors**




### More Images



# Exterior Doors Waterproof Double Glass Aluminum Patio Doors Hurricane Proof

## Key Features:

1. Patio retro fit kit
2. Solid aluminum frame
3. Thermally broken frame
4. Thermally broken door
5. Double pane glass with Argon Gas

## FAQ

Q1: Are aluminum folding doors energy-efficient?

Most models feature thermal breaks and can be equipped with energy-efficient glazing options, such as double or triple glazing and Low-E coatings, to improve thermal performance.

Q2: What is the typical lifespan of aluminum folding doors?

With proper maintenance, aluminum folding doors can last for 30 years or more, depending on usage and environmental conditions.

Q3: Do aluminum folding doors require special installation?

It's recommended to have them professionally installed to ensure proper alignment and operation.

Q4: Can aluminum folding doors be installed in existing openings?

Yes, they can be retrofitted into existing openings, but structural modifications may be required depending on the size and configuration.

Q5: What styles of aluminum folding doors are available?

They come in various styles, including different panel configurations (e.g., two-panel, three-panel, or multi-panel setups) and finishes that can match your home's decor.

## Why choose Eloyd Windows and Doors ?

Protect what matters most. Our customized doors and windows come with advanced locking systems and sturdy materials, providing peace of mind without compromising on style. Whether you prefer the classic charm of wooden doors, the sleek look of aluminum, or the durability of fiberglass, we offer a variety of materials to suit your taste. Add decorative glass inserts, sidelights, or transoms for a personalized touch. Our custom designs ensure a perfect fit with your existing architecture, enhancing the overall aesthetic of your space. From modern minimalism to traditional elegance, we cater to all design preferences.

## What is a aluminum folding door ?

aluminum bi-fold doors are a great way to open space in your kitchen, office, or living room. The easy folding doors give you a fast transition to any room or environment. The thermal break glass and frame make the bi-folds a perfect choice for upgrading your house and is an energy-efficient and cost-effective solution for most openings. Argon gas and True Seal weatherstripping keep your home warm in the winter and cool in the summer. The powder coating finish on the aluminum frame enhances its durability against all weather conditions. The tri-lock locking mechanism of folding doors has been designed with added security. The German multi-lock covers each panel on the sliding track which turns your doors into a solid thermal break wall. An optional bug screen is available too.

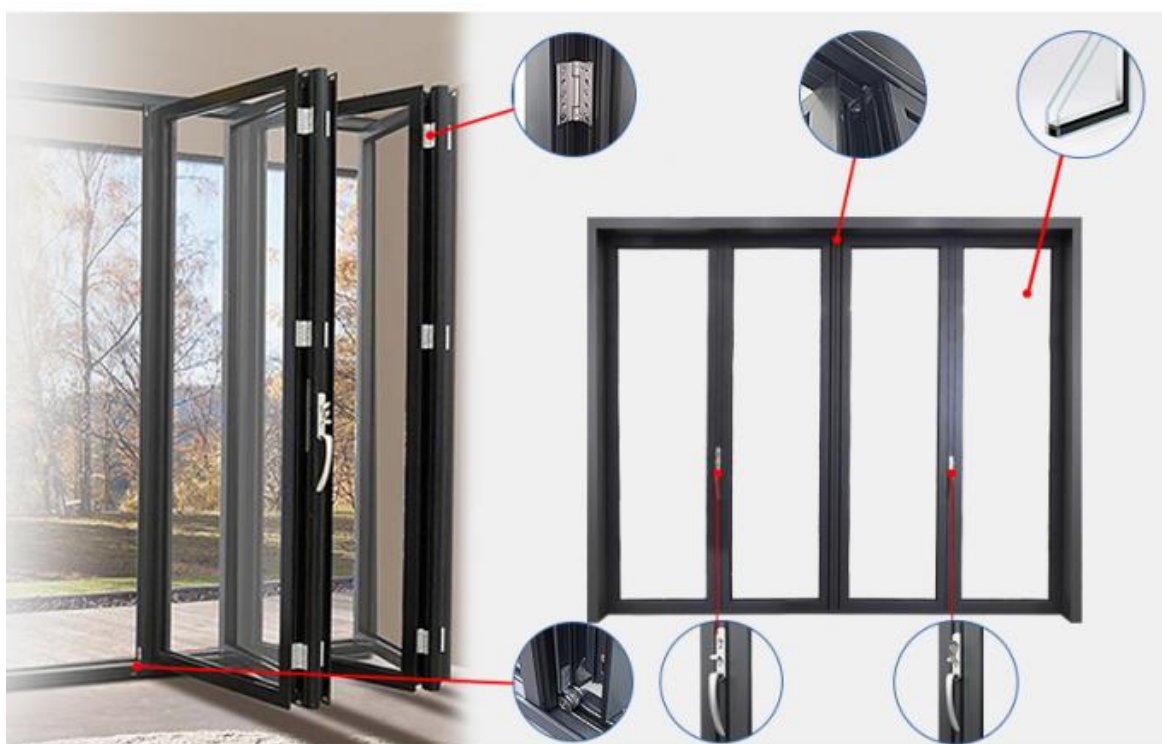
## Product Parameters:

SERIES	78 serie folding door
BRAND	Eloyd
PROFILE	6063# T5 aluminum alloy profiles
THICKNESS	2.0mm Thick Aluminium
GLASS	5+20A+5mm Double Clear Tempered Glass
HARDWARE	standard Lock & Handle
SURFACE TREATMENT	Powder Coating, Anodized

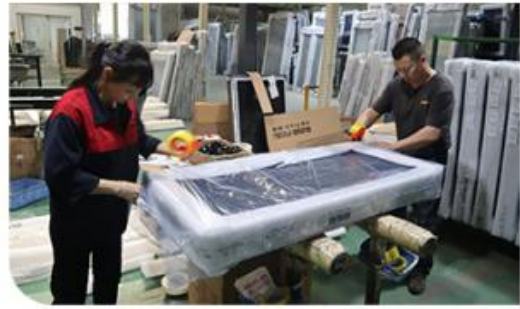


## PRODUCT PARAMETER

ELOYD



# Packing and shipping



## TRANSPORTATION



## **Logistics AndTransportation**

Clear and trackable logistics process

ELOYD understand the importance of timely and safe delivery. That's why we offer an efficient logistics service, letting you track your order anytime.

**Comprehensive door-to-door transportation service**

We offer a complete door-to-door transportation service from our factory to your doorstep, aiming to provide you with a pleasant shopping experience.

### **Packing and delivery process**

1. Product Packaging 2. Product Sorting 3. Dispatch 4. Confirmation of Goods 5. Logistics Unloading 6. Buyer Receiving

# Certificate



AS2047



CSA



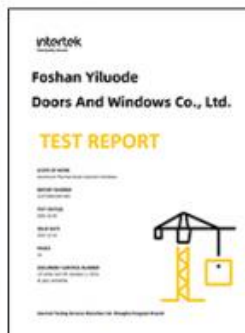
CE



CE



ALIBABA CERTIFICATION



Intertek  
Total Quality Assured.



PATENT CERTIFICATE



PATENT CERTIFICATE



America



Germany



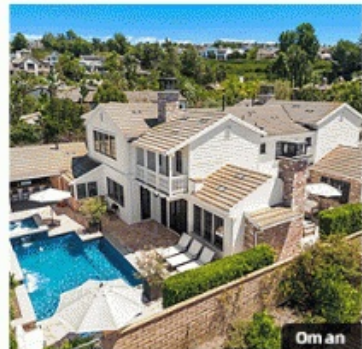
America



Britain



Australia



Oman



Russia



Singapore

## ARE YOU A CONTRACTOR ?

### **Project Experience:**

Both in personal cases solution and project construction, Eloyd has professional guidance and experience.

1. High-quality windows and doors
2. Engineering quality assurance
3. One-stop supply of windows and doors
4. Installation tutorial
5. After-sales service
6. Delivery and shipment



**Foshan Yiluode Doors And Windows Co., Ltd.**



+8618169835994



sales08@fseloyd.com



aluminiumwindowsdoor.com

6-2 North Songgang Industrial Road, Shishan Town Foshan Guangdong China