



## 3 Panels Folding Screen Door Accordion Aluminum Folding Patio Glass Doors

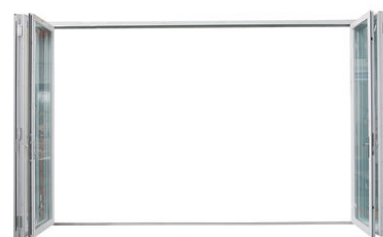
Our Product Introduction

for more products please visit us on [aluminiumwindowdoor.com](http://aluminiumwindowdoor.com)

### Basic Information

- Place of Origin: China
- Brand Name: Eloyd
- Certification: CE
- Model Number: 78 serie folding door
- Minimum Order Quantity: 2
- Price: 168USD/
- Packaging Details: EPE Foam wrapped
- Delivery Time: 25-30days
- Payment Terms: L/C, T/T, Western Union, PayPal
- Supply Ability: 10000

**LOYD**



### Product Specification

- Feature: Waterproof
- Main Material: Aluminum+glass
- Glass: 5+20A+5mm Double Clear Tempered Glass
- Drawings: 3D Design Drawings
- Package Method: EPE Foam Wrapped
- Hardware: Germany RUNAS
- Warranty: 10 Years
- SURFACE TREATMENT: Powder Coating
- Highlight: **Accordion Aluminum Folding Patio Doors, Glass Folding Patio Doors, 3 Panels Folding Patio Doors**

**LOYD**



### More Images

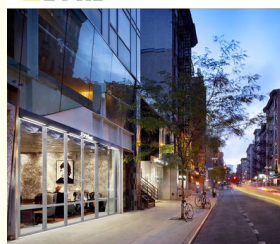
**LOYD**



**LOYD**



**LOYD**



## 3 Panels Folding Screen Door Accordion Aluminum Folding Patio Glass Doors

### Why choose Eloyd Windows and Doors ?

Eloyd Doors and Windows, founded in 2016, boasts years of experience in the manu-facturing of doors and windows. We are a large-scale, high-end German-style doors and windows enterprise that specializes in independent research, production, and sales. Our flagship products include aluminum alloy system doors and windows, such as heavy-duty sliding doors, luxury folding doors, thermal break casement windows, soundproof sliding windows, European-style sunrooms, pavilions, and pergolas.

**Aluminum folding doors offer a versatile and stylish solution for enhancing indoor-outdoor living. If you have any further questions or need specific details, it's always best to consult with a professional or manufacturer.**

### What is a aluminum folding door ?

Aluminum folding doors, also known as bi-fold doors, are a stylish and functional option for creating flexible living spaces. They consist of multiple panels that fold and stack to one or both sides, allowing for wide openings and seamless transitions between indoor and outdoor areas. Aluminum folding doors combine modern design and functionality, making them an excellent choice for enhancing indoor-outdoor living spaces. Their durability, energy efficiency, and aesthetic versatility make them suitable for both residential and commercial applications.

### Key Features:

1. Durable Construction(providing resistance to rust, corrosion, and weathering.)
2. Flexible Configuration(ensuring long-lasting performance)
3. Variety of Finishes(Offered in a range of colors and finishes)
4. Glazing Options(Available with energy-efficient glass, including double or triple glazing and Low-E coatings)
5. Smooth Operation( Equipped with durable hinges and tracks for reliable performance)

### FAQ

Q1: Are aluminum folding doors energy-efficient?

Most models feature thermal breaks and can be equipped with energy-efficient glazing options, such as double or triple glazing and Low-E coatings, to improve thermal performance.

Q2: What is the typical lifespan of aluminum folding doors?

With proper maintenance, aluminum folding doors can last for 30 years or more, depending on usage and environmental conditions.

Q3: Do aluminum folding doors require special installation?

It's recommended to have them professionally installed to ensure proper alignment and operation.

Q4: Can aluminum folding doors be installed in existing openings?

Yes, they can be retrofitted into existing openings, but structural modifications may be required depending on the size and configuration.

Q5: What styles of aluminum folding doors are available?

They come in various styles, including different panel configurations (e.g., two-panel, three-panel, or multi-panel setups) and finishes that can match your home's decor.

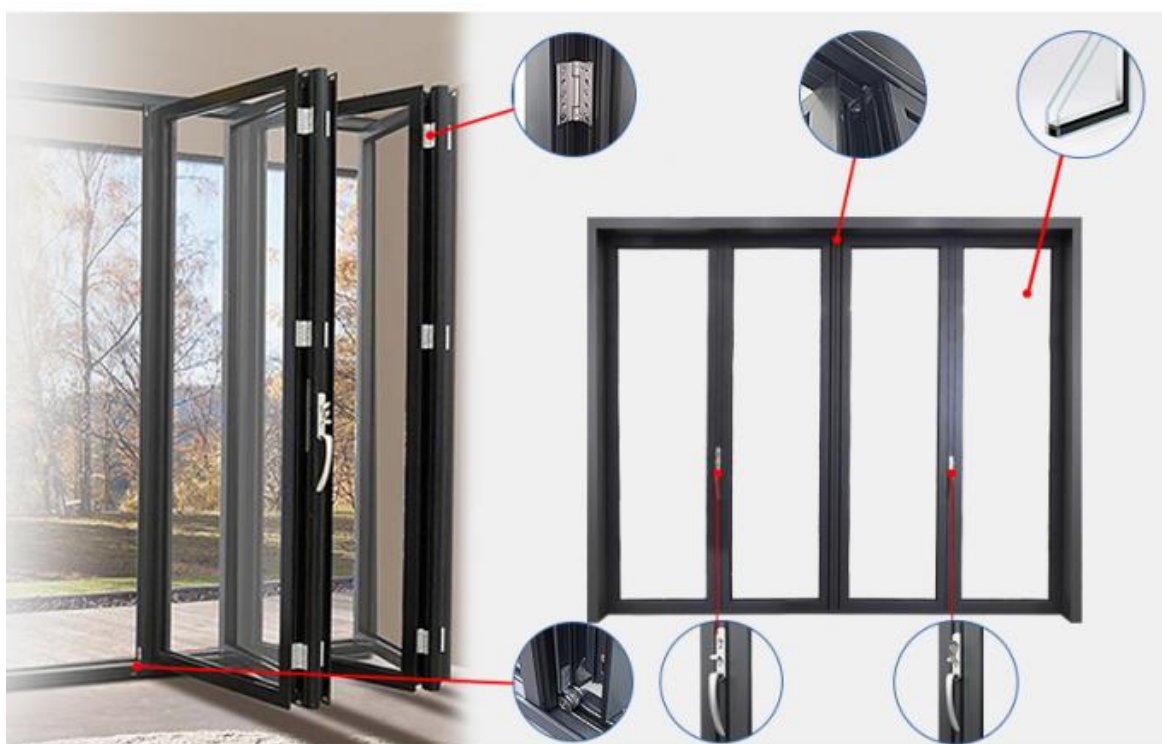
### Product Parameters:

SERIES	78 series folding door
BRAND	Eloyd
PROFILE	6063# T5 aluminum alloy profiles
THICKNESS	2.0mm Thick Aluminium
GLASS	5+20A+5mm Double Clear Tempered Glass
HARDWARE	standard Lock & Handle
SURFACE TREATMENT	Powder Coating, Anodized



## PRODUCT PARAMETER

ELOYD



# Packing and shipping



## TRANSPORTATION



## **Logistics AndTransportation**

Clear and trackable logistics process

ELOYD understand the importance of timely and safe delivery. That's why we offer an efficient logistics service, letting you track your order anytime.

Comprehensive door-to-door transportation service

We offer a complete door-to-door transportation service from our factory to your doorstep, aiming to provide you with a pleasant shopping experience.

### **Packing and delivery process**

1. Product Packaging 2. Product Sorting 3. Dispatch 4. Confirmation of Goods 5. Logistics Unloading 6. Buyer Receiving

# Certificate



AS2047



CSA



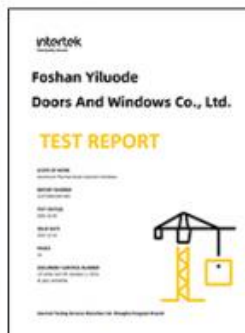
CE



CE



ALIBABA CERTIFICATION



Intertek  
Total Quality Assured.



PATENT CERTIFICATE



PATENT CERTIFICATE



America



Germany



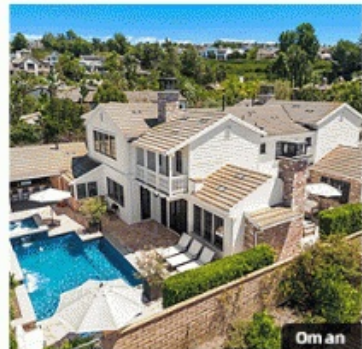
America



Britain



Australia



Oman



Russia



Singapore

## ARE YOU A CONTRACTOR ?

### Project Experience:

Both in personal cases solution and project construction, Eloyd has professional guidance and experience.

1. High-quality windows and doors
2. Engineering quality assurance
3. One-stop supply of windows and doors
4. Installation tutorial
5. After-sales service
6. Delivery and shipment



Foshan Yiluode Doors And Windows Co., Ltd.



+8618169835994



sales08@fseloyd.com



aluminiumwindowsdoor.com

6-2 North Songgang Industrial Road, Shishan Town Foshan Guangdong China